

# Social-Emotional Learning

A Solution of  Navigate360

## Why Navigate360's Social-Emotional Learning Is More Important than Ever

---

*Understand why districts, administrators and counselors turn to Navigate360's Social-Emotional Learning (SEL) to help students succeed academically, emotionally and socially.*

# Introduction

For modern educators and administrators, providing the best possible environment for learning is a complex task. Today's students face unique challenges and frequently have emotional and social needs that many aspects of traditional education fail to address. But, with the non-academic social-emotional learning (SEL) curriculum provided by Navigate360, educators, administrators, parents, caregivers, and students alike can all take an active role in the emotional and social growth necessary for students to become happy, healthy, and capable adults.

To give students the tools they need, Navigate360 SEL leverages professionally developed, research-based lessons and programs that are delivered in an easy-to-understand digital format to create an engaging atmosphere for everyone involved. With lessons scaffolded across grades K-12 and the flexibility to meet all state and district mandates, Navigate360 SEL gives educators and administrators access to strategies that address relevant and appropriate issues for their students' specific needs, leading to better academic and behavioral outcomes overall.



## DID YOU KNOW?

A March 2021 Navigate360|Zogby nationwide safety and wellbeing poll of American teens revealed that:

- 62% of teens are not confident school officials can create an atmosphere of physical and emotional safety
- 49% of teens are aware of a classmate or student who was bullied because of their race, sexual orientation, or income level
- 59% of teens say they know someone who has considered self-harm or suicide



### DID YOU KNOW?

According to a recent [study](#) conducted by Cambridge University and published in the Journal of Benefit-Cost Analysis, for every \$1 invested in social-emotional learning (SEL) programs and lessons, there is a return of \$11.

## Why an Effective SEL Program Engages Students, Staff and Caregivers

Research has found that SEL programs are more effective when all the adults a student interacts with throughout the day take part in it. By embedding the lessons of SEL programs into different parts of the school day, students learn that these lessons aren't simply a project to be completed, but that they can provide useful ways to process complex emotions and navigate social interactions.



# Navigate360's Social-Emotional Learning (SEL) Curriculum



## **SEL FOR STUDENTS: DIGITAL CURRICULUM THAT MEETS STUDENTS RIGHT WHERE THEY ARE**

Educators know it can be a challenge to present ideas and information to students in an engaging way. SEL for Students has been designed to be both intuitive and comprehensive, aiding in the character development of students throughout grades K-12. Its scaffolded curriculum provides lessons appropriate for each grade level, presented in an interactive, digital format that students are already comfortable with. SEL for Students' digital curriculum also enables consistency in the distribution of SEL lessons over the course of an individual student's education.



## **TOPICS COVERED BY SEL FOR STUDENTS**

As students' experiences expand and their needs change, so do their SEL requirements. SEL for Students helps ensure that all students are given guidance on relevant issues with a regularly updated library of hundreds of topics, including:

- Self-management
- Responsible decision-making
- Bullying prevention
- Effective communication
- Academic success
- Substance abuse
- Growth mindset
- And hundreds more!







## SEL FOR FAMILIES: EQUIP PARENTS TO BE YOUR GREATEST ALLY

Keeping parents and caregivers engaged in their student's social-emotional development as it relates to SEL curriculum is crucial. SEL for Families provides tools for educators and parents to work together while staying up-to-date and informed.

SEL for Families features interactive and informative programs that are designed to support their student's SEL program. Its comprehensive library offers lessons on hundreds of evolving topics, so caregivers can provide support for important issues, like:

- Mental health and depression
- Respect
- Drugs, alcohol, and vaping
- Racial tolerance
- Tardiness and absenteeism
- Study skills
- Digital citizenship
- And hundreds more!



Privacy and convenience are at the heart of SEL for Families. Since many topics in a student's SEL journey may be sensitive or stigmatized, SEL for Families enables private communication and fosters an environment of growth in which both students and parents feel comfortable. And keeping caregivers active and informed in SEL programming has been shown to increase the success rate of a student's own social-emotional education.

### TESTIMONIAL:

"RECENTLY, WE HELD A FORUM ON SOCIAL MEDIA; WE THOUGHT THE EVENT WOULD BE REALLY HELPFUL FOR PARENTS, BUT MAYBE FIFTY PARENTS SHOWED UP. SO, WE'RE LOOKING FOR OTHER WAYS TO COMMUNICATE WITH FAMILIES. NAVIGATE360 IS A BETTER AVENUE TO REACH PARENTS MORE QUICKLY. IT'S GREAT THAT WE CAN NOW SEND MATERIALS ON KEY TOPICS HOME."

- Aaron Taylor, Principal, Waynesboro Middle School





## **SEL FOR STAFF: EMPOWER STAFF WITH THE TRAINING THEY NEED.**

School staff will always be the most critical part of any SEL curriculum, and SEL for Staff provides the robust, adjustable tools they need to be effective. SEL for Staff offers educators and other members of the faculty and staff the skills necessary to effectively lead and take part in an SEL program, and, thanks to web-based and mobile lessons, they can do so conveniently.

SEL for Staff offers lessons on relevant topics to help school staff tackle issues and problems they face on a daily basis. With a focus on professional development, including lessons aimed at increasing inclusivity and consistency among staff, SEL for Staff helps keep your entire team aligned and successful, while also improving the outcomes of your students' SEL programs.



## **TOPICS COVERED BY SEL FOR STAFF**

SEL for Staff empowers schools with relevant and complex training needed to stay compliant and up to date. This comprehensive library includes hundreds of modern topics like:

- Sensitivity
- LGBTQ equity and tolerance
- Dealing with disruptive students
- Strategies to reduce tardiness and absenteeism
- Student mental health
- Harassment, intimidation, and bullying
- Equity in the classroom
- Inappropriate relationships
- De-escalating conflict
- Cyberbullying



# Mental Health & Restorative Practices



## NAVIGATE360 INTERVENTION & RESTORATIVE PRACTICES: TURN DISCIPLINE INTO A LEARNING OPPORTUNITY

Featuring lessons that are based on specific infractions, Intervention & Restorative Practices helps students learn practical methods to reduce and avoid recidivism, transforming disciplinary action into a learning opportunity. With professional guidance and research-driven curriculum, Intervention & Restorative Practices provides a framework for school staff to address challenging behaviors while working toward the ultimate goal of helping students improve and succeed.

Intervention & Restorative Practices delivers content digitally in a convenient format that encourages student participation and engagement. It includes hundreds of researched and relevant topics, like:

- Drugs, alcohol, and vaping
- Bullying and cyberbullying
- Tardiness and absenteeism
- Respect
- Digital citizenship
- Racial equity
- LGBTQ equity and tolerance
- Fighting and aggression

Additionally, Intervention & Restorative Practices offers robust reporting tools, so staff can monitor and gauge a student's progress. And, unlike suspensions and other traditional punishments, this program keeps students in the classroom, where they can continue to learn and grow. By offering disciplinary responses that focus on restorative practices rather than punishment, students gain a positive outlook toward authority, justice, and fairness that lasts throughout their life.



### TESTIMONIAL:

"LEGISLATORS IN OUR STATE CREATED A LAW THAT REQUIRES SCHOOLS TO ENGAGE IN RESTORATIVE PRACTICES, BUT HOW TO DO SO IS A DIFFERENT STORY. WHEN OUR PRINCIPAL AND I CAME ACROSS NAVIGATE360 SEL AT A CONFERENCE LAST SUMMER... WE SAID THIS PROGRAM PRETTY MUCH EXACTLY FITS RESTORATIVE PRACTICES THAT THE STATE IS TALKING ABOUT IN TERMS OF EDUCATION FOR STUDENTS."

- Kyle Meteyer, Associate Principal, Lake Orion High School





## **MENTAL HEALTH & PREVENTION: PROVIDE STUDENTS WITH SKILLS THEY NEED TO BE HAPPY, HEALTHY, AND SUCCESSFUL**

Navigate360 Mental Health & Prevention invites students to take part in bettering their mental health, with digital lessons that are immersive, interactive, and engaging. With lessons aimed at providing appropriate resources for K-12 students and scaffolded by grade, students of any age can benefit from this program.

Navigate360 Mental Health & Prevention is designed to provide mental health education, empowering students to learn how they can help others and care for themselves, with easy-to-understand lessons. It also gives educators and school staff helpful resources, with informative companion guides that provide researched-based support to improve SEL efficacy.



### **DID YOU KNOW?**

1 in 5 students reports experiencing mental health conditions before the age of 25.





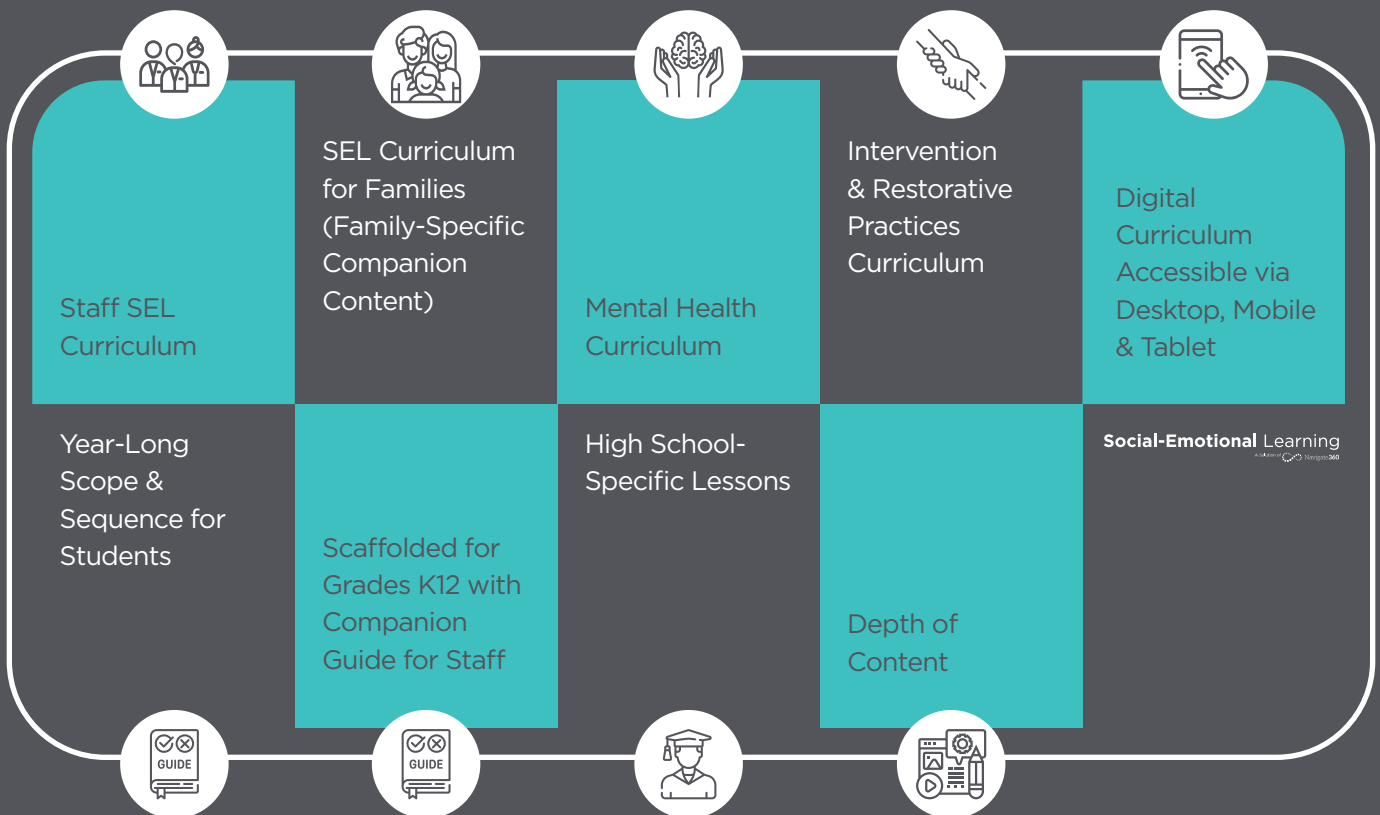
# Conclusion

Effective SEL implementation is about aligning the needs of students with the goals of administrators and educators, while encouraging active participation from parents and caregivers. For all these needs, Navigate360 offers solutions—delivered digitally, conveniently, and with robust reporting capabilities, so you can track program progress and chart your school and students’ success.

When you decide to implement an SEL program in your schools, Navigate360 SEL is the solution backed by research and supported by results.



## 9 Benefits that Set Navigate360 SEL Apart



If you have complex SEL implementation needs, or if you just want the most effective, research-based digital program for your students across K-12, Navigate360 delivers. [Schedule a demo today!](#)

# Social-Emotional Learning

A Solution of  Navigate360

